

Bliss Box Former

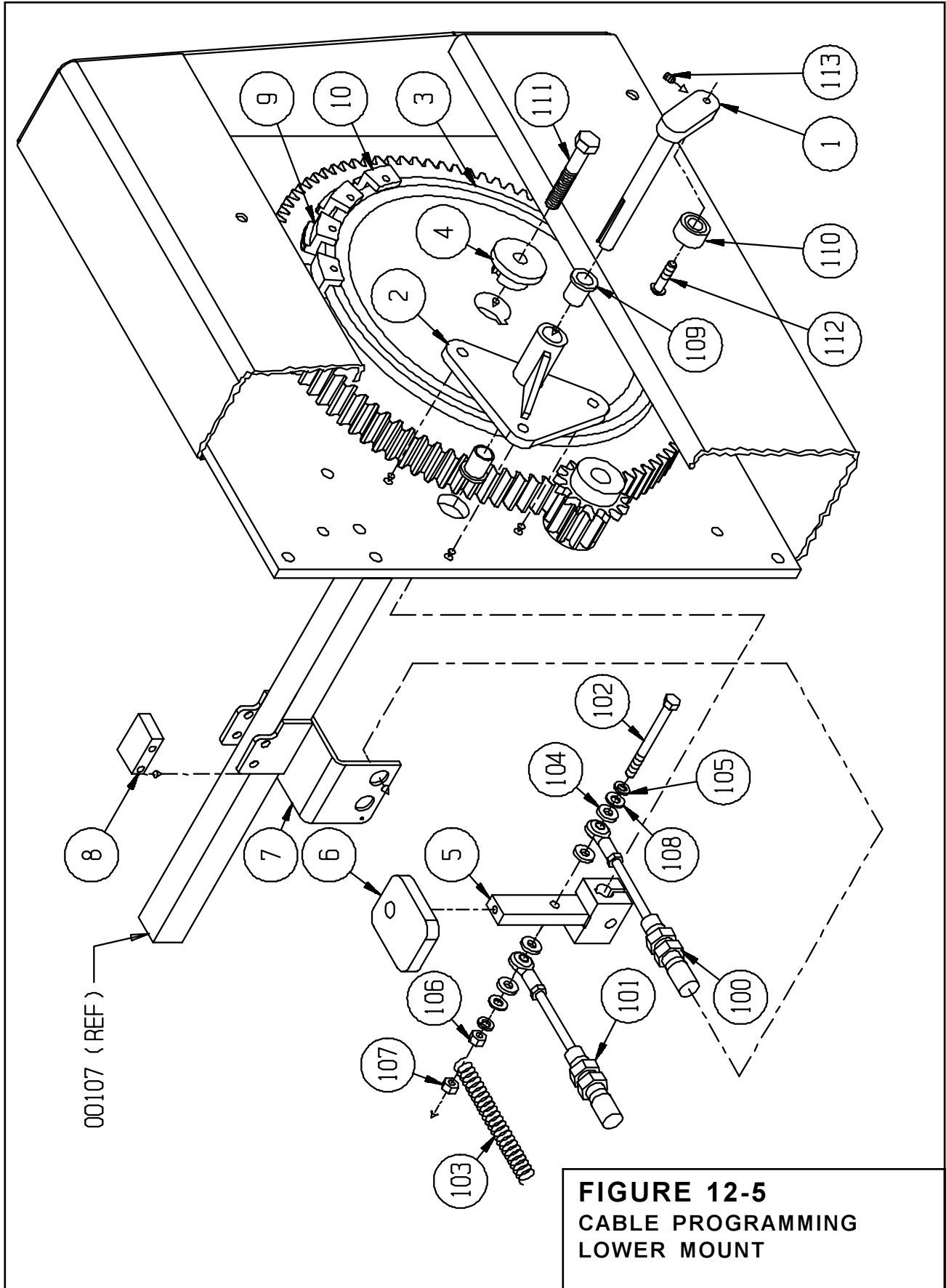


FIGURE 12-5
CABLE PROGRAMMING
LOWER MOUNT

ITEM	PART NO.	DESCRIPTION	QTY.
1	0078700	ROLLER ARM SHAFT	1
2	0078600	PIVOT BRACKET	1
3	0080000	DISC, CAM	1
4	0079100	PLUG	1
5	0078800	PIVOT BLOCK	1
6	0079800	BUMPER, RUBBER	1
7	0079200	BRACKET, LOWER CABLE	1
8	0079900	BLOCK, BOLTING	1
9	0021303	SEGMENT, LEAD	A/N
10	0021304	SEGMENT, LEAD	A/N
100	0079700	5/16 CABLE, 1-65	1
101	0079600	5/16 CABLE, 1-106	1
102		5/16-18 HEX HD SCR X 3 LG	1
103	1202500	SPRING	1
104	1501100	WASHER	4
105		5/16 STD LOCK WASHER	2
106		5/16-18 HEX HD NUT	1
107		5/16-18 FIBER LOCK NUT	1
108		5/16 STD FLAT WASHER	2
109	0208100	BUSHING, BRONZE	2
110	0501400	1" CAM FOLLOWER	1
111	0501900	CABLE PROGRAM SCREW	1
112		5/16-18 BUTTON HD SCR X 1 1/4	1
113		1/4-20 CUP PT SET SCR X 3/8	1



Bliss Box Former



Option Parts & Illustrations

Bliss Box Former



FIGURE 12-6
CABLE PROGRAMMING
UPPER MOUNT

ITEM	PART NO.	DESCRIPTION	QTY.
1	0079000R/L	UPPER PIVOT BRACKET	1/1
2	0078900R/L	UPPER ROLLER ARM SHAFT	1/1
3	0079400	SPACER, CABLE PROGRAM	2
4	0019700	MOUNT, MELT POT	2
5	0079300	ARM, UPPER PIVOT	2
100	0208100	BUSHING, BRONZE	4
101	0204100	BUSHING	2
102	0500500	1 3/8" BEARING	2



Bliss Box Former

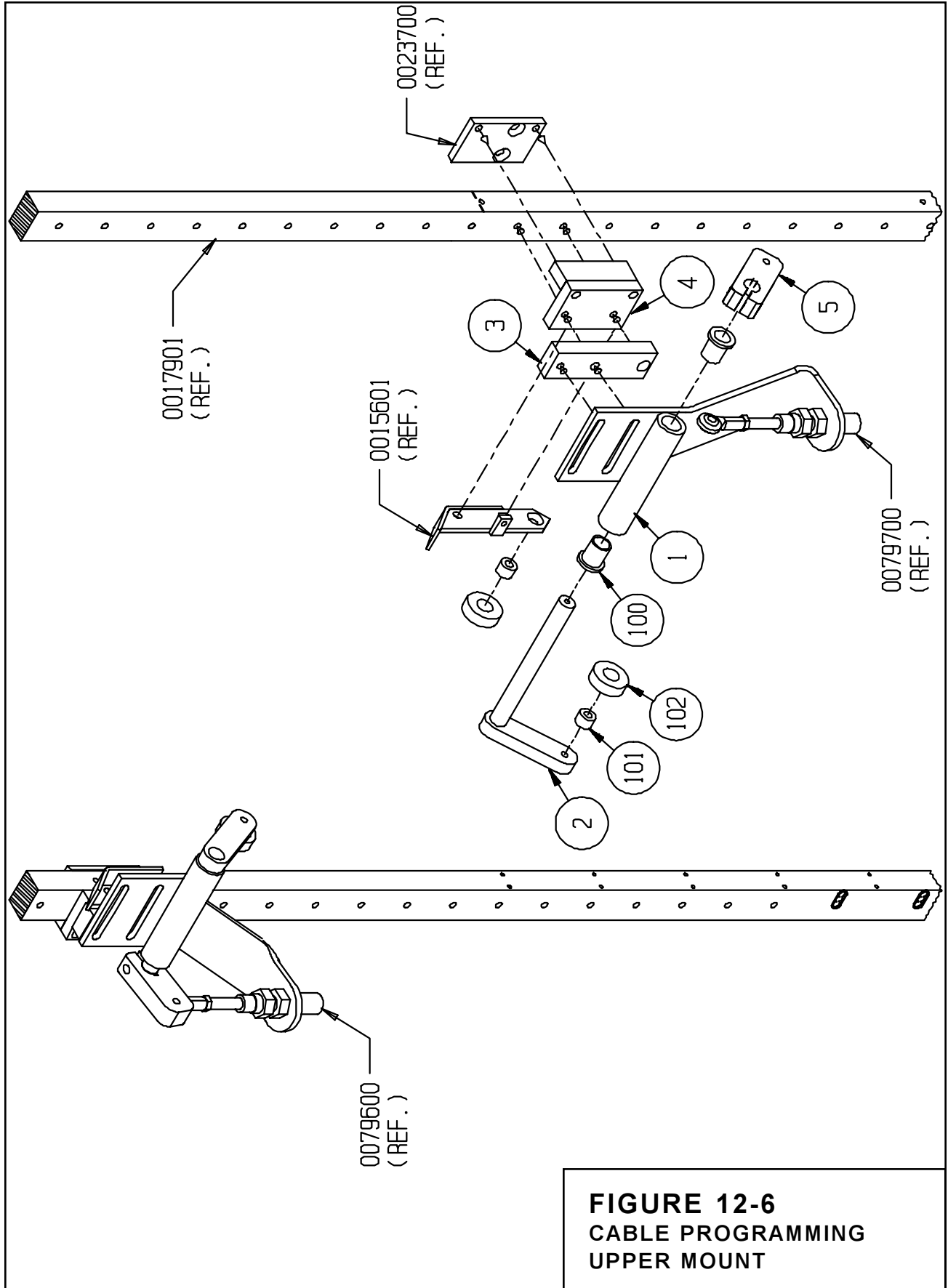


FIGURE 12-6
CABLE PROGRAMMING
UPPER MOUNT

Option Parts & Illustrations