

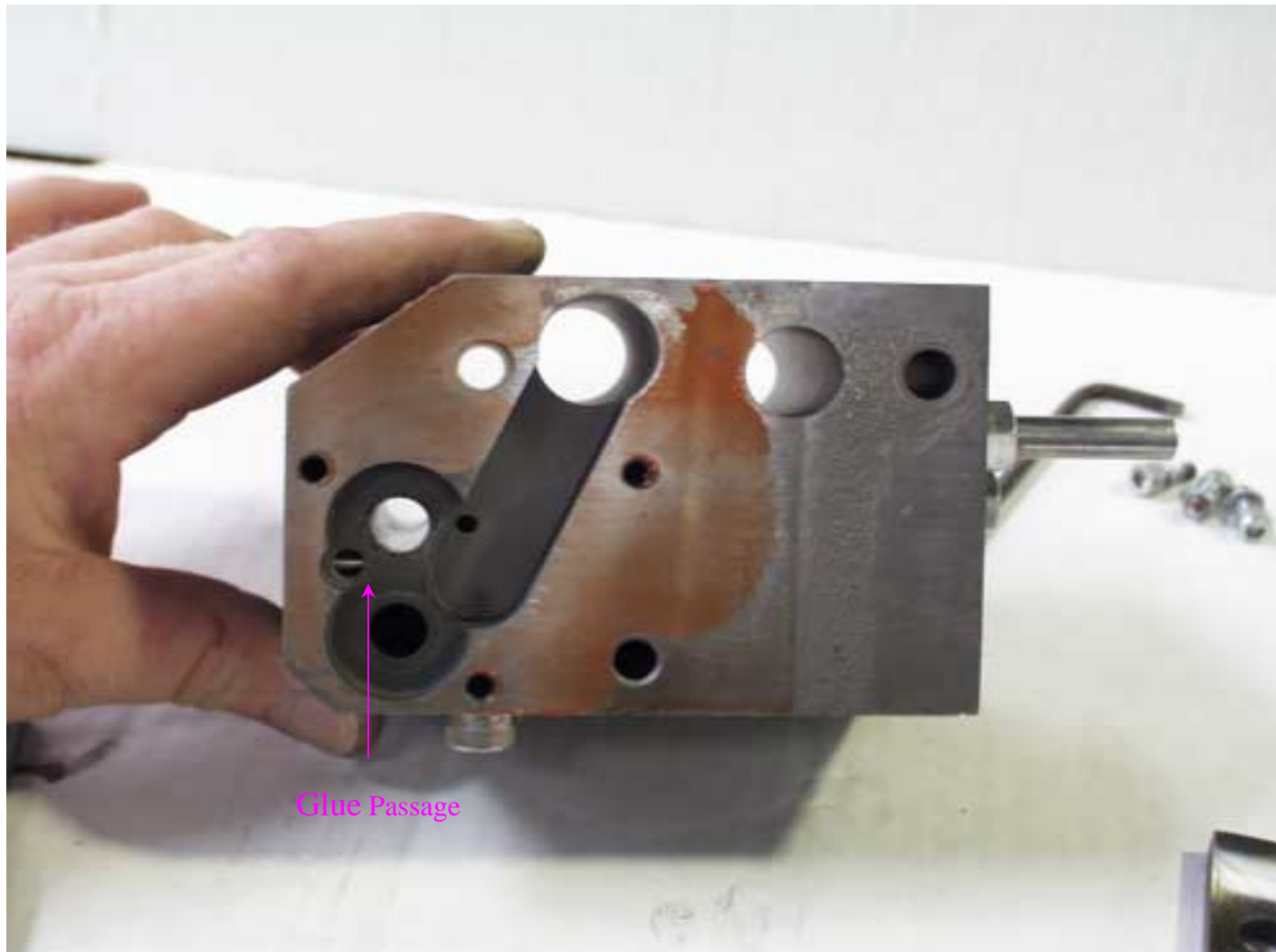
Standard Glue Pump



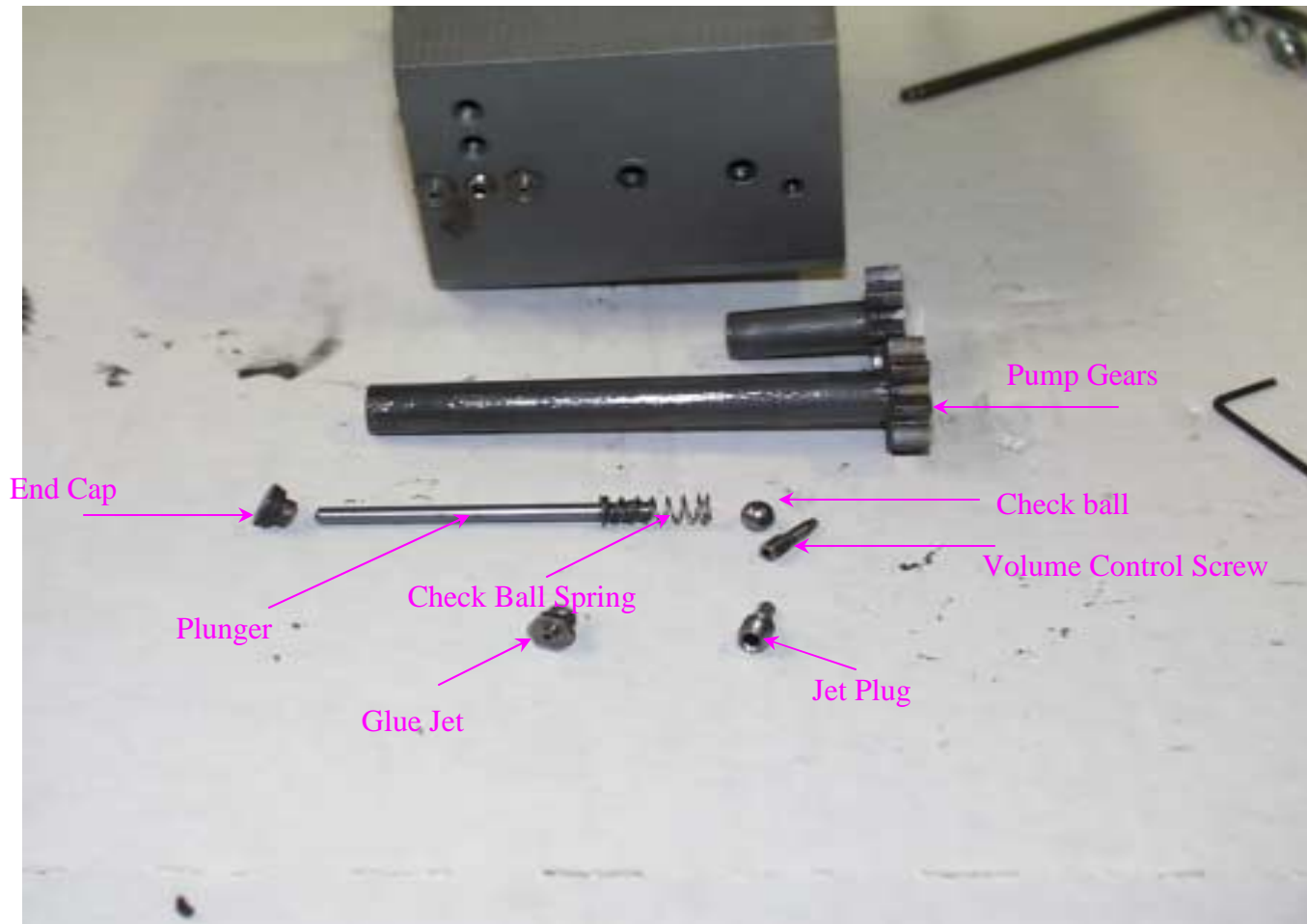
Glue Galley w/ Pump Gears



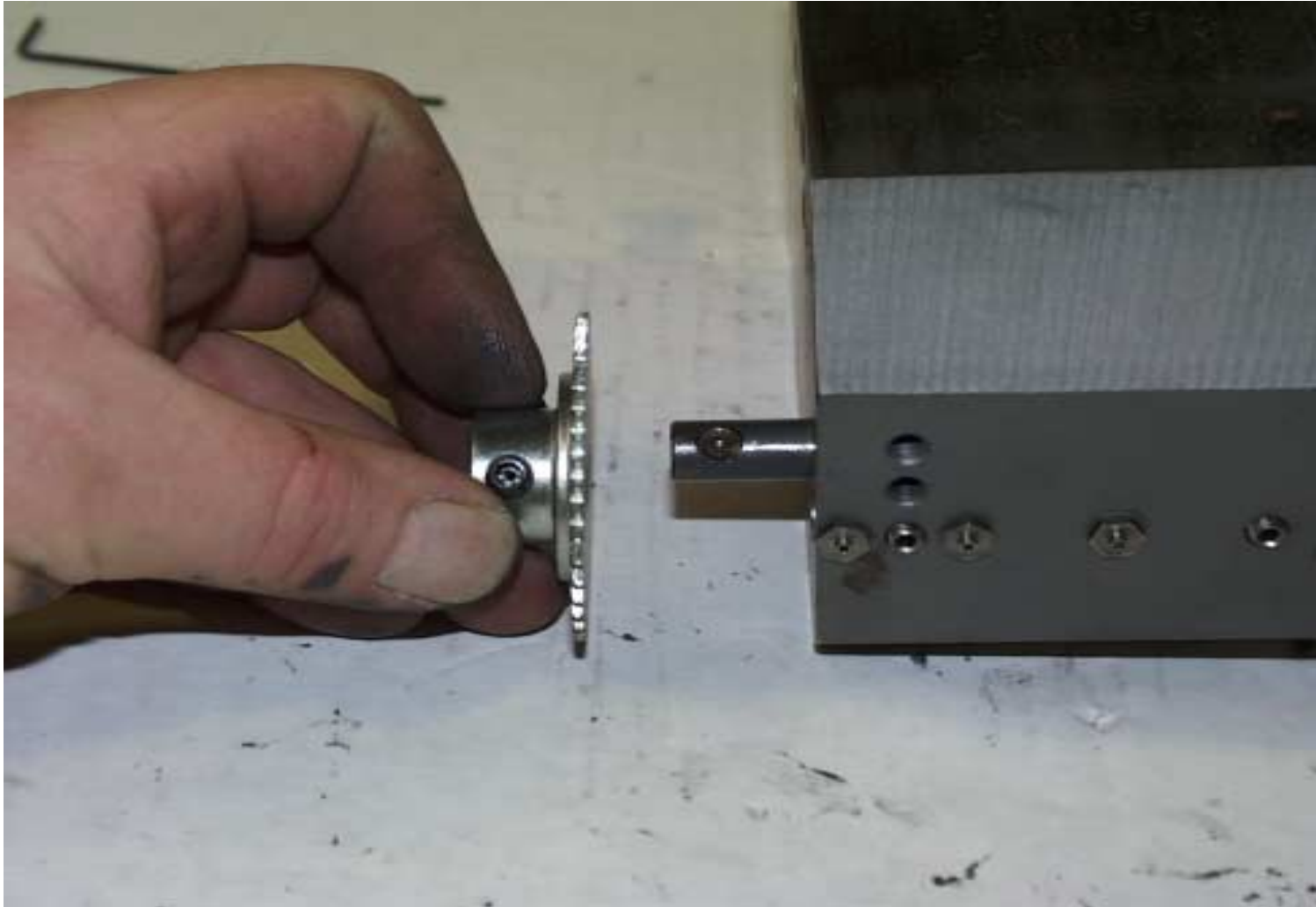
Pump Side View



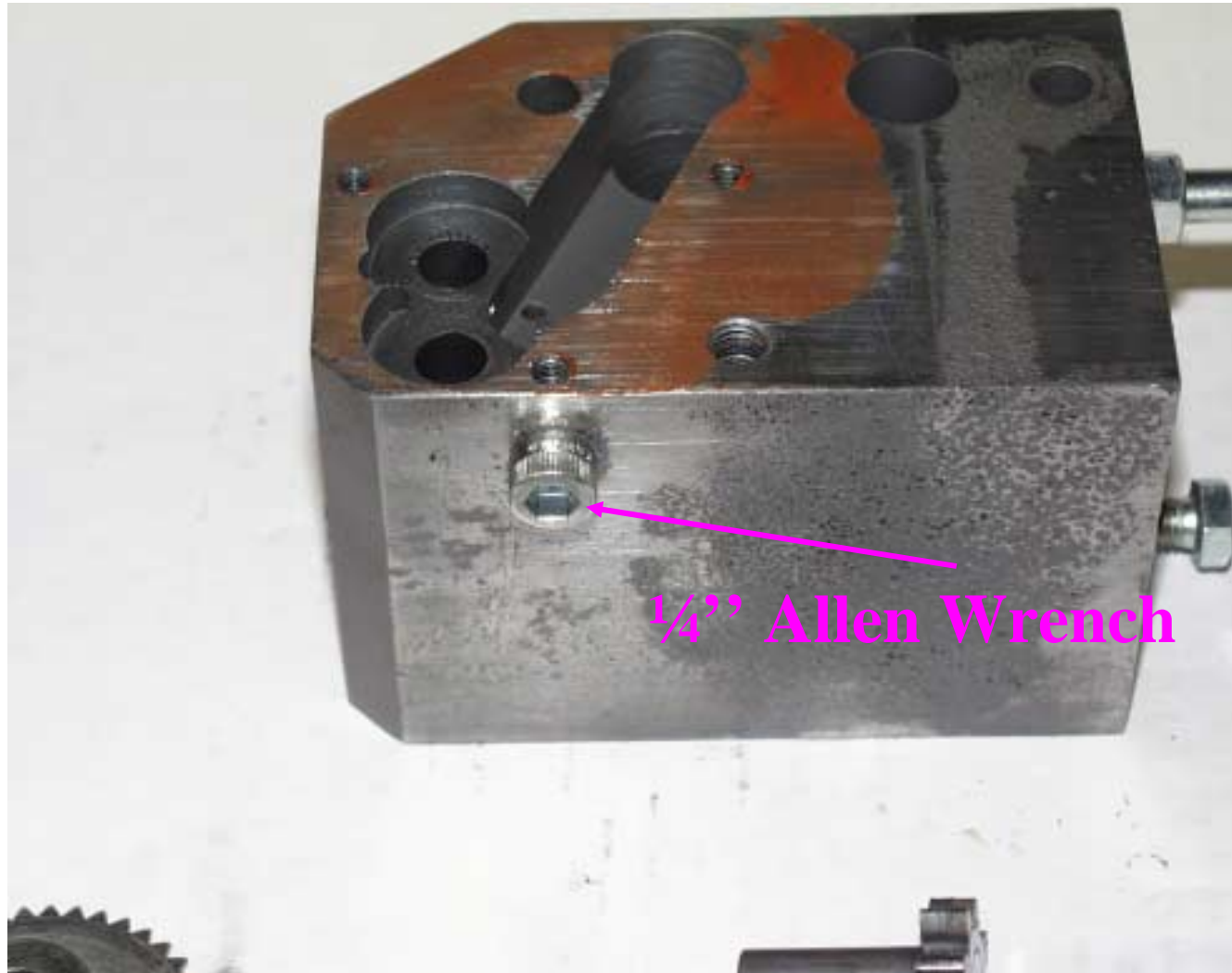
Internal Pump Parts



Star Wheel

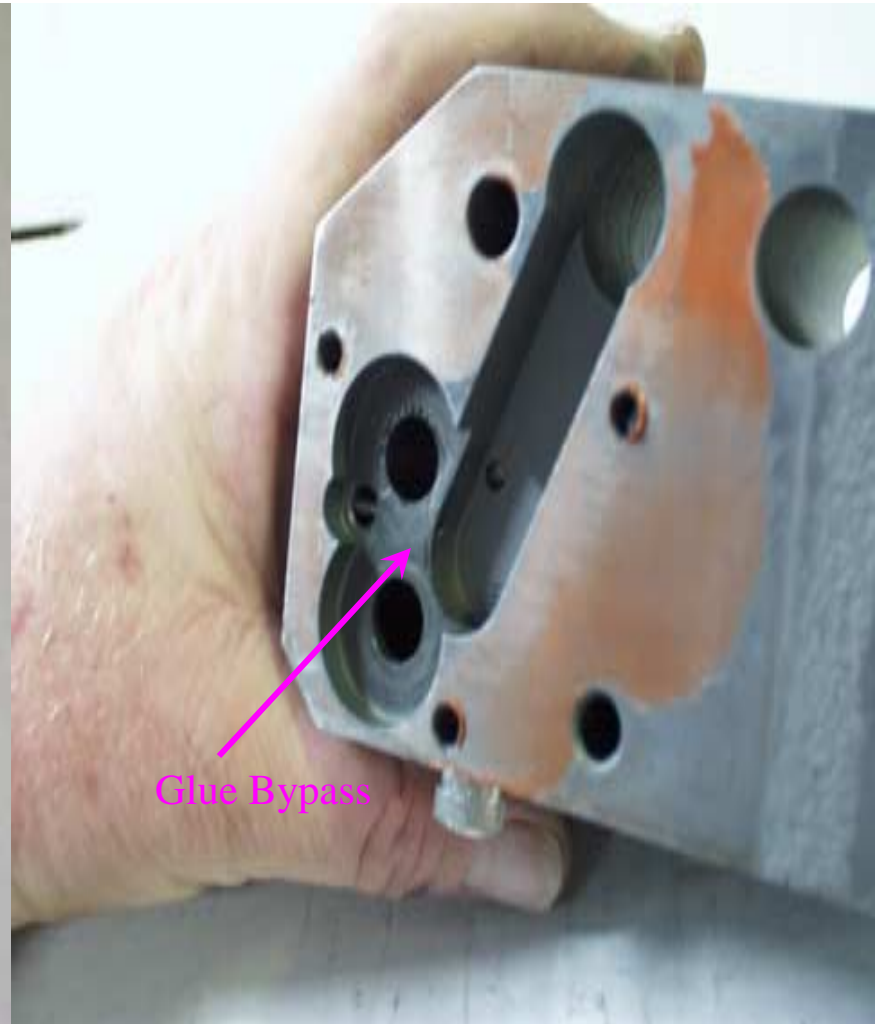


Pump Drain Plug



Volume Control Adjustment

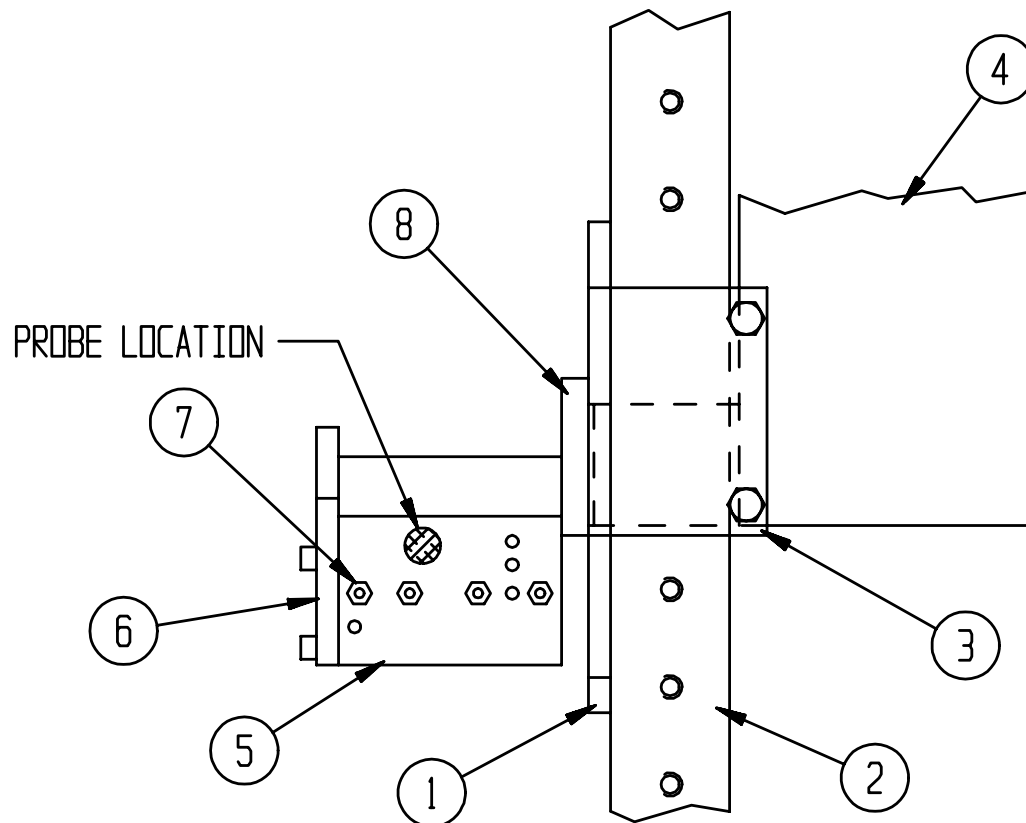
Adjust in for more volume out for less



Thermostat Calibration



Turn on machine and allow adhesive to reach operating temperature (about 1/2 hour warm up time). Using a surface probe pyrometer, measure the temperature just above one of the glue jets (refer to Figure 7-1 for correct probe location). If the temperature measured with the pyrometer is the same as shown by the thermostat control knob, the thermostat is calibrated. If the temperatures are not the same, recalibration can be accomplished by the following method.



Calibration Procedure

1. Set the thermostat control knobs to the same temperature measured with the pyrometer.
2. Remove the thermostat control knobs (with the knobs removed the calibration adjusting screw will be visible by looking into the knob mounting stud).
3. Using a small screwdriver, turn the calibration adjusting screw until the heater indicating light goes off.
4. Turn the screw in the opposite direction until light comes on.
5. Then, turn the screw only until the light goes off.
6. Replace the knobs, set both thermostats at operating temperature and recheck in an hour.

Note: When calibrating the adhesive applicator pump thermostat, all thermostats should be calibrated.

Changing Glue Jet



Plug



Cleaning Check Ball Seat



Cleaning Pump Gear Shaft Hole

“V” drill bit

After cleaning
apply never seize
to gear shaft
before installing



Cleaning Between Star Wheel and Pump Body

Clean all buildup from between Pump Body and Star Wheel
Weekly



Daily Maintenance

Check glue system

- Are all jets working properly
- Are glue pots kept full
- Is glue being stored properly
- Are the glue pots at the correct temp